

C-Fe-P (Carbon-Iron-Phosphorus)

V. Raghavan

The previous review of this system by [1988Rag] presented a liquidus projection and a reaction scheme for both the stable and the metastable equilibria and two isothermal sections at 950 and 700 °C, mainly from the studies of [1929Vog], [1970Hof], [1970Lan], and [1984Sch]. Recently, [2000Shi] carried out a thermodynamic assessment of this system and compared the experimental results with the computed phase equilibria.

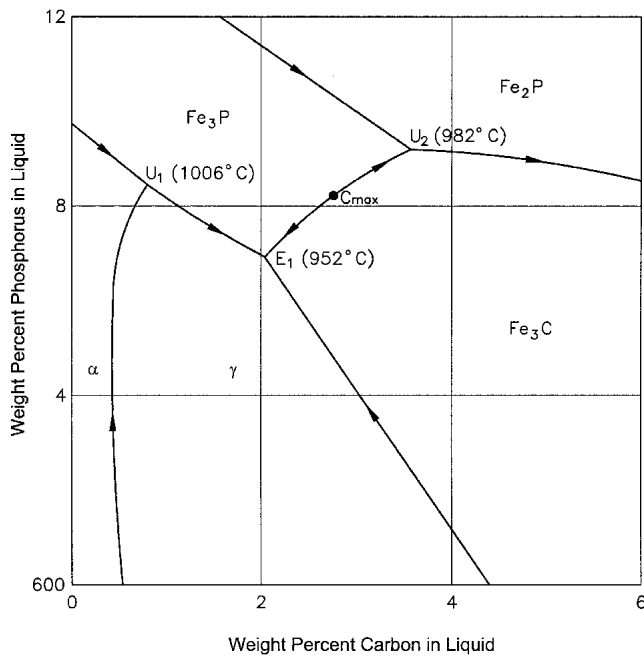


Fig. 1 C-Fe-P computed liquidus projection [2000Shi]

Binary Systems

The Fe-C phase diagram [1985Gus] is in the form of a double diagram, corresponding to either the metastable equilibrium with cementite Fe_3C ($D0_{11}$ -type orthorhombic) or the stable equilibrium with graphite. Austenite γ [face-centered cubic (fcc)] forms through a peritectic reaction at 1495 °C between body-centered-cubic (bcc) iron (δ) and liquid. Around 1150 °C, the stable and the metastable eutectic reactions occur, yielding austenite and graphite (or cementite). Around 730 °C, austenite undergoes the eutectoidal transformation to bcc Fe (α) and graphite (or cementite). The partial Fe-P phase diagram [1982Kub] depicts three intermediate phases: Fe_3P (Ni_3P -type tetragonal), Fe_2P ($C22$ type hexagonal), and FeP (MnP -type orthorhombic). At the Fe end, a gamma loop is present, with the maximum solubility of P of 0.55 at.% (0.30 wt.%) in fcc Fe. The solidification temperature of Fe is substantially lowered by P reaching 1048 °C, where a eutectic reaction yields Fe_3P and bcc Fe (α) containing 4.52 at.% (2.55 wt.%) P.

Computed Ternary Phase Equilibria

Shim et al. [2000Shi] made a thermodynamic assessment of this ternary system, using their own description of the Fe-P system and that of [1985Gus] for the Fe-C system. The liquid phase was described as a regular substitutional solution. The two-sublattice model was used for the fcc and bcc solid solutions. Fe and P substitute for each other on the substitutional sites. Vacancies (V_a) and C reside in the interstitial sublattice. New results on the solubility of P in Fe-C melts [1992Yan] were included in the optimization. A ternary interaction parameter was derived for the liquid phase.

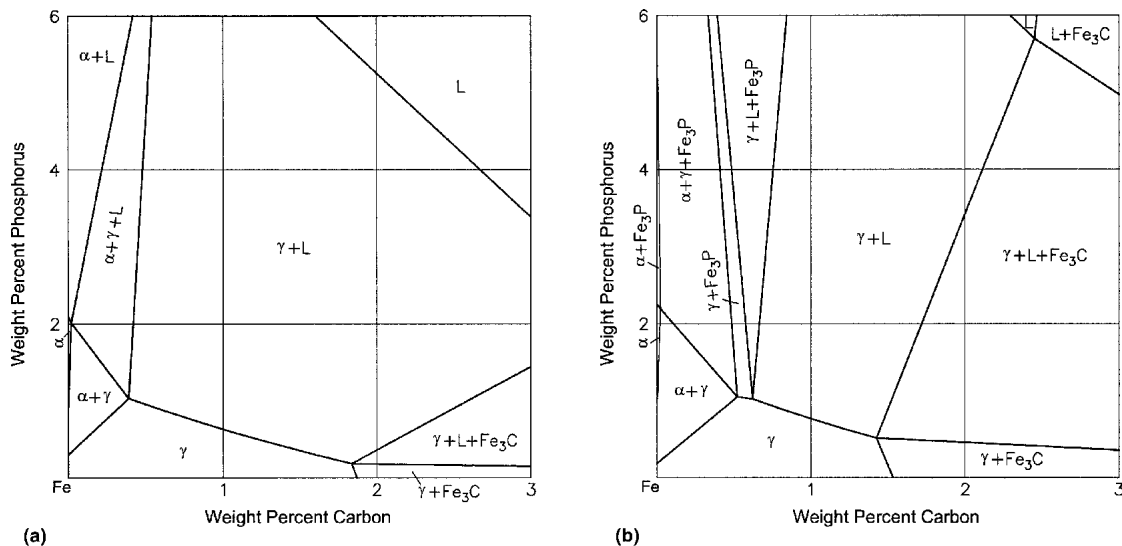


Fig. 2 C-Fe-P computed isothermal sections at (a) 1100 °C and (b) 1000 °C [2000Shi]

Section II: Phase Diagram Evaluations

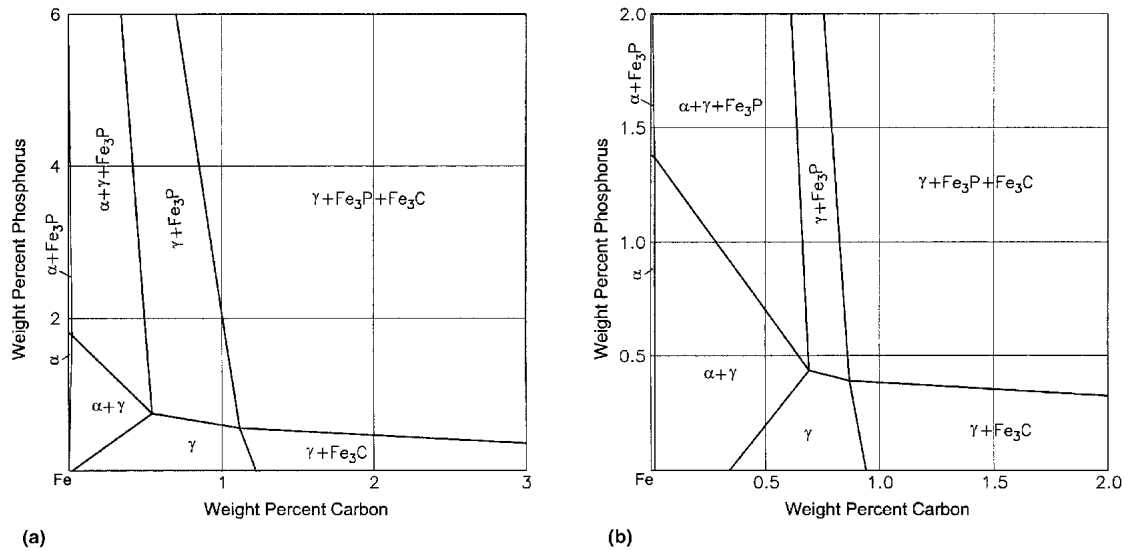


Fig. 3 C-Fe-P computed isothermal sections at (a) 900 °C and (b) 800 °C [2000Shi]

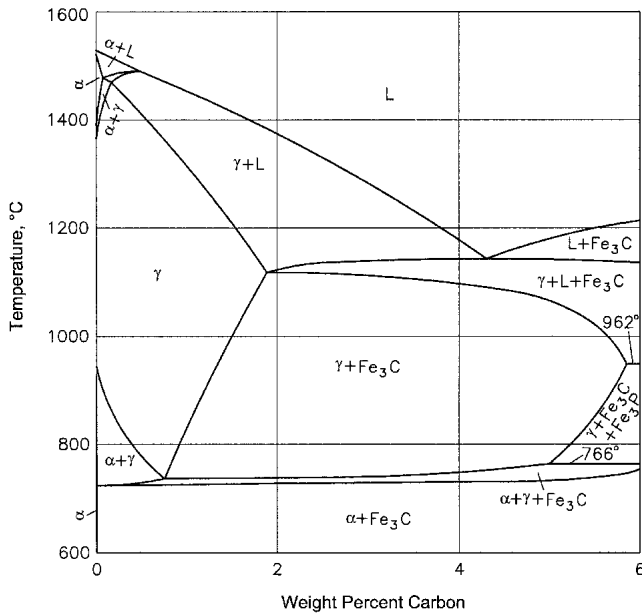


Fig. 4 C-Fe-P computed vertical section at $P = 0.1$ wt.% [2000Shi]

The liquidus projection and five isothermal sections at 1100, 1000, 950, 900, and 800 °C were computed by [2000Shi] for the metastable equilibrium with Fe_3P . The liquidus projection is redrawn in Fig. 1. A comparison with the liquidus reviewed by [1988Rag] shows that an additional transition reaction U_2 is present in the computed projection in Fig. 1 near the Fe_3P - Fe_3C join. The computed isothermal sections at 1100, 1000, 900, and 800 °C are redrawn in Fig. 2 and 3, to supplement the data reviewed by [1988Rag].

Vertical sections along the 91Fe9P-95.5Fe4.5C, 92Fe8P-97Fe3C, 98Fe2P-98Fe2C, 98.4Fe1.6P-98.4Fe1.6C, and Fe-97Fe1.5P1.5C joins (all in weight percent) were calcu-

lated by [2000Shi] and compared with the experimental results of [1929Vog]. The computed Fe_3P - Fe_3C section was pseudobinary below 1000 °C, as was given in the earlier reports [1929Vog], [1984Sch], and [1988Rag]. Three more vertical sections were computed at constant weight percents of 2.4C, 0.1P, and 1P. The vertical section at 0.1 P is redrawn in Fig. 4. The invariant horizontal seen at 952 °C is the ternary eutectic reaction $L \leftrightarrow \gamma + \text{Fe}_3\text{C} + \text{Fe}_3\text{P}$, indicated at 955 °C in the reaction table of [1988Rag]. The horizontal at 766 °C corresponds to the transition reaction $\gamma + \text{Fe}_3\text{P} \leftrightarrow \alpha + \text{Fe}_3\text{C}$, placed at ~ 750 °C by [1988Rag].

References

- 1929Vog:** R. Vogel, The Iron-Phosphorus-Carbon System, *Arch. Eisenhüttenwes.*, Vol 3 (No. 5), 1929, p 369-381 (in German)
- 1970Hof:** H.P. Hofmann, K. Lohberg, and W. Reif, Solubility of Phosphorus in Fe and Fe-C Alloys below 1000 °C, *Arch. Eisenhüttenwes.*, Vol 41 (No. 10), 1970, p 975-982 (in German)
- 1970Lan:** G. Langenscheid, H.A. Mathesius, and F.K. Naumann, Use of the Quantitative Television Microscope and of the Electron Beam Microprobe in the Study of the Fe-C-P System at 900-1000 °C, *Arch. Eisenhüttenwes.*, Vol 41 (No. 8), 1970, p 817-824 (in German)
- 1982Kub:** O. Kubaschewski, Iron-Phosphorus, *Iron—Binary Phase Diagrams*, Springer-Verlag, Berlin, Germany, 1982, p 84-86
- 1984Sch:** E. Schurmann, U. Hensgen, and J. Schweinichen, Melt Equilibrium of the Ternary Systems Fe-C-Si and Fe-C-P, *Geisereiforsch.*, Vol 36 (No. 4), 1984, p 121-129 (in German)
- 1985Gus:** P. Gustafson, A Thermodynamic Evaluation of the Fe-C System, *Scand. J. Metall.*, Vol 14 (No. 5), 1985, p 259-267
- 1988Rag:** V. Raghavan, The C-Fe-P (Carbon-Iron-Phosphorus) System, *Phase Diagrams of Ternary Iron Alloys, Part 3*, Indian Institute of Metals, Calcutta, 1988, p 33-44
- 1992Yan:** Y.D. Yang, Interaction Coefficients in Fe-C-P Ternary and Fe-Cr-C-P Quaternary Solutions at 1400 °C, *Scand. J. Metall.*, Vol 21 (No. 5), 1992, p 194-201
- 2000Shi:** J.H. Shim, C.S. Oh, and D.N. Lee, Thermodynamic Assessment of the Fe-C-P System, *Z. Metallkde.*, Vol 91 (No. 2), 2000, p 114-120